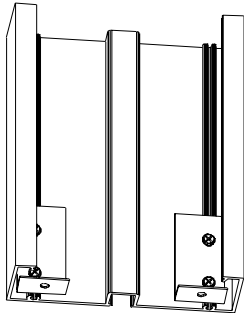


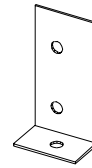
Eclipse Systems, Inc.

Compression System - Glazing Mullion Instructions

VERTICAL MULLION

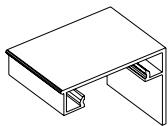


1) PRE DRILL THE MULLION CLIPS FOR #7 SIZE SCREWS (4 CLIPS PER MULLION).



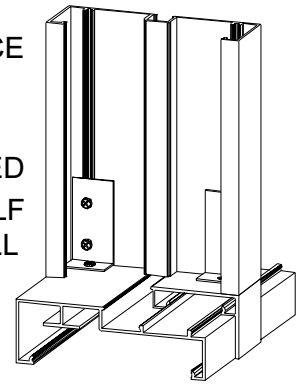
2) ATTACH THE LONG SIDE OF THE CLIPS TO THE TWO SCREW RACEWAYS WITH 3/8" X #7 PAN HEAD SCREWS, WHILE HOLDING THE CLIPS 1/16" BACK FROM THE END OF THE GLAZING RAIL. REPEAT THIS AT THE OTHER END OF THE RAIL .

HOLDING THE CLIPS BACK 1/16" PULLS THE MULLION TO THE JAMB FOR A TIGHTER FIT.

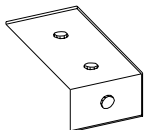


3) CUT A 1-1/2" PIECE OF SILL SNAP-ON STOP. SNAP THE PIECE ON THE SILL WHERE THE MULLION IS TO BE LOCATED.

4) POSITION THE GLAZING RAIL (WITH CLIPS INSTALLED) AT THE REQUIRED LOCATION, BETWEEN THE HEAD AND SILL. ATTACH THE RAIL USING 1/2" SELF DRILLING SCREWS THROUGH THE SHORT SIDE OF THE CLIP INTO THE SILL AND HEAD. SNAP THE GLAZING SNAP-IN INTO THE ATTACHED RAIL TO COMPLETE THE MULLION.

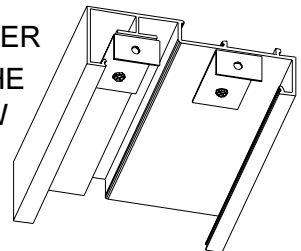


HORIZONTAL MULLION

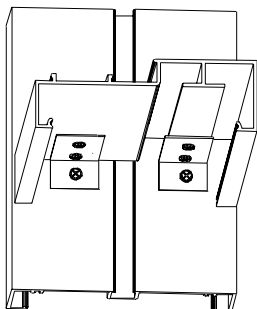


1) PRE DRILL THE MULLION CLIPS FOR #7 SIZE SCREWS (4 CLIPS PER MULLION).

2) ATTACH THE LONG SIDE OF THE CLIP ON THE END OF THE SILL UNDER WHERE THE STOP SNAPS ON, WITH 3/8" X #7 PAN HEAD SCREWS. HOLD THE CLIP 1/16" BACK FROM THE END OF THE SILL. MAKE CERTAIN THE SCREW PLACEMENT DOES NOT INTERFERE WITH THE SNAP-ON STOP. IN THE SAME MANNER, ATTACH ANOTHER CLIP TO THE "T" PORTION ON THE UNDERSIDE OF THE SILL. REPEAT THIS AT THE OTHER END OF THE SILL.



HOLDING THE CLIPS BACK 1/16" PULLS THE MULLION TO THE SILL & HEAD FOR A TIGHTER FIT.



3) POSITION THE GLAZING SILL (WITH CLIPS INSTALLED) AT THE REQUIRED LOCATION, BETWEEN THE GLAZING JAMBS. ATTACH THE SILL USING 1/2" SELF DRILLING SCREWS THROUGH THE SHORT SIDE OF THE CLIP INTO THE JAMBS. SNAP THE GLAZING SNAP-IN INTO THE ATTACHED SILL TO COMPLETE THE MULLION.