



Eclipse Systems, Inc.
943 Hanson Court
Milpitas, CA 95035

Voice 408.263.2201
Fax 408.263.2206

ALUMINUM DOOR FRAME SPECIFICATIONS:

Eclipse Systems Aluminum Door Frame and Glazing Systems are designed to provide the precision lines and architectural detail that only aluminum can offer.

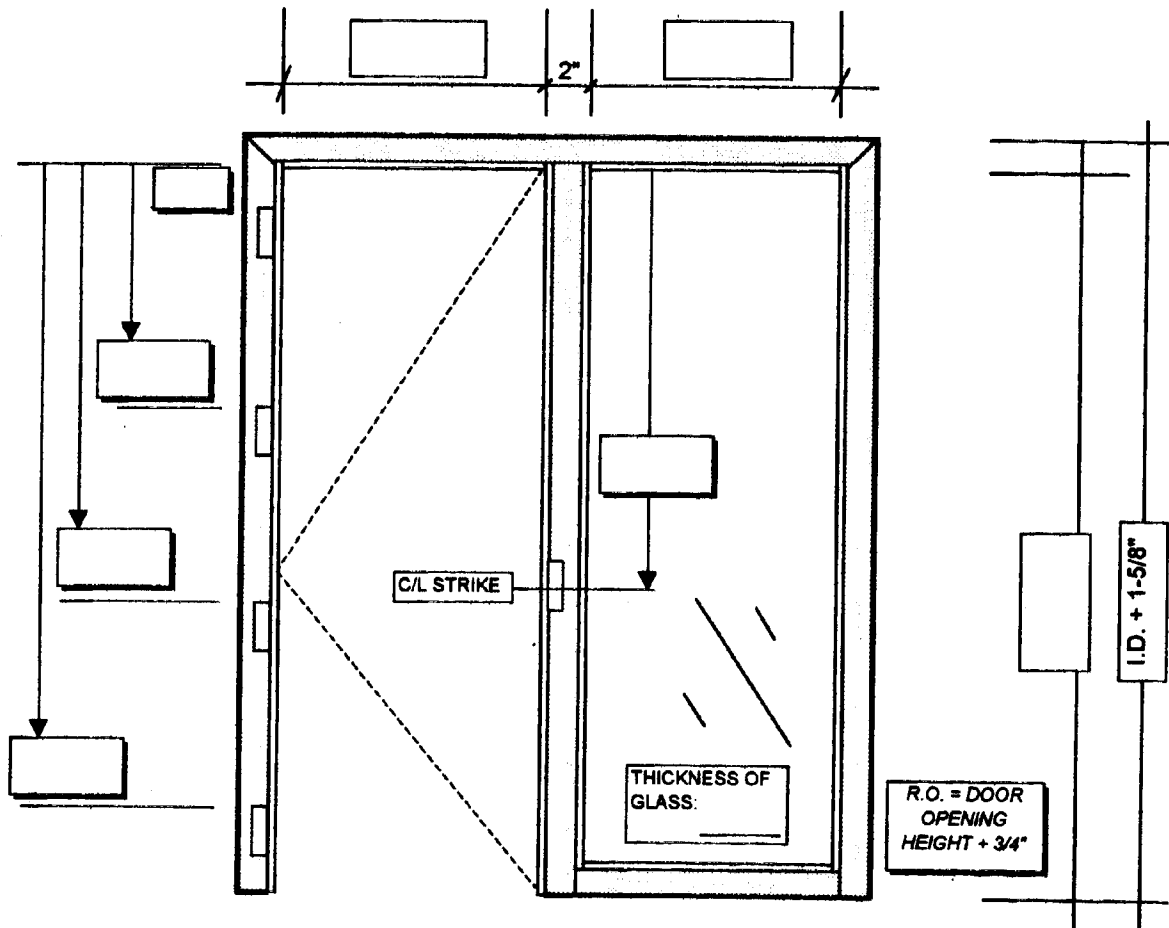
- ✓ Eclipse Door Frames are manufactured in three common throat sizes: **3-3/4"** (for both demountable and standard drywall partitions), **4-7/8"** and **7-1/4"**.
- ✓ Frames are fabricated from 6063T5 alloy and tempered with a nominal wall thickness of 0.080.
- ✓ All Eclipse components are stocked in Dark Bronze and Commercial Clear Anodized finishes. Custom color baked enamel and power coat frames are also available.
- ✓ Door Frames are factory mortised and reinforced for standard 4-1/2" x 4-1/2" 0.134 hinges. Strike legs are reinforced for standard ASA - 4-7/8" strike. T-Strike prep is also available upon request.
- ✓ All frames are fitted and shipped with continuous pre-installed felt weather stripping. Frames are packaged as knockdown, three-piece units. Cut net lengths available upon request.
- ✓ All mitered Door Frames are shipped with mitered trim and corner clips necessary for installation. For full height frames being installed in Eclipse Demountable Top Track, a snap-in head will be provided (**3-3/4"** walls only).
- ✓ Eclipse Door Frames are designed to work interchangeably with Eclipse Glazing Components for all Compression, Standard Trim and Flush Trim Glazing Assemblies. All Glazing Components are manufactured in both **3-3/4"** and **4-7/8"**. Glazing Components are manufactured for 1/4" glass. Routing for 3/8" glass is also available upon request.
- ✓ All Door Frames carry a 20 Minute Fire Rating up to 8-0 x 10-0 Pair and have successfully passed both 3-0 x 9-0 Door Frame with a 2-0 x 9-0 Compression Sidelight Frame and 3-0 x 10-0 Door Frame with a 2-0 x 10-0 Compression Sidelight Frame Assembly.

**Fire Test Results Are On File At
Warnock Hersey Fire Test Laboratories in Antioch, California.**

ECLIPSE SYSTEMS, INC

DOOR FRAME AND TRIMMED SIDELITE DETAIL SHEET # _____ OF _____ DATE: _____

PROJECT NAME: _____ REFERENCE # _____ PO # _____



FRAME TYPE: STANDARD TRIM _____ FLUSH TRIM _____ FINISH: _____

CUT NET WIDTH _____ CUT NET HEIGHT _____ 2" SCRIBE _____

THROAT SIZE: 3-3/4 _____ 4-7/8 _____

20 MIN. LABEL _____ *SPECIAL INSTRUCTIONS _____

***STANDARD NOTES:**

ROUGH OPENING WIDTH = DOOR FRAME + SIDELITE + 3-1/2"

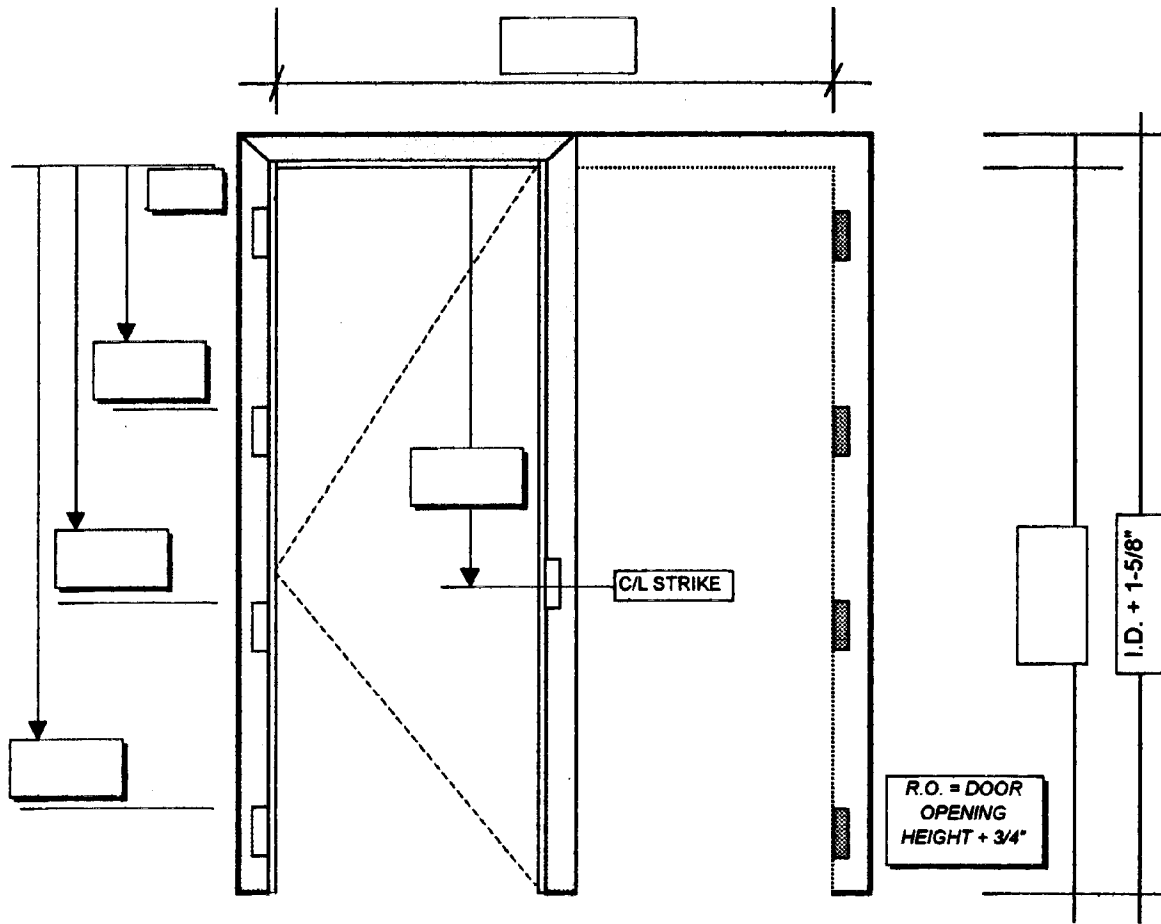
STANDARD HINGES: 4-1/2 X 4-1/2, STRIKE : ASA U.O.N.

ECLIPSE SYSTEMS, INC

DATE: _____

DOOR FRAME AND PAIR FRAME DETAIL SHEET # _____ OF _____

PROJECT NAME: _____ REFERENCE # _____ PO # _____



DOOR FRAME: STANDARD TRIM _____ FLUSH TRIM _____ FINISH: _____

CUT NET WIDTH _____ CUT NET HEIGHT _____ 2" SCRIBE _____

THROAT SIZE: 3-3/4 _____ 4-7/8 _____ 7-1/4 _____

20 MIN. LABEL _____ *SPECIAL INSTRUCTIONS _____

***STANDARD NOTES:**

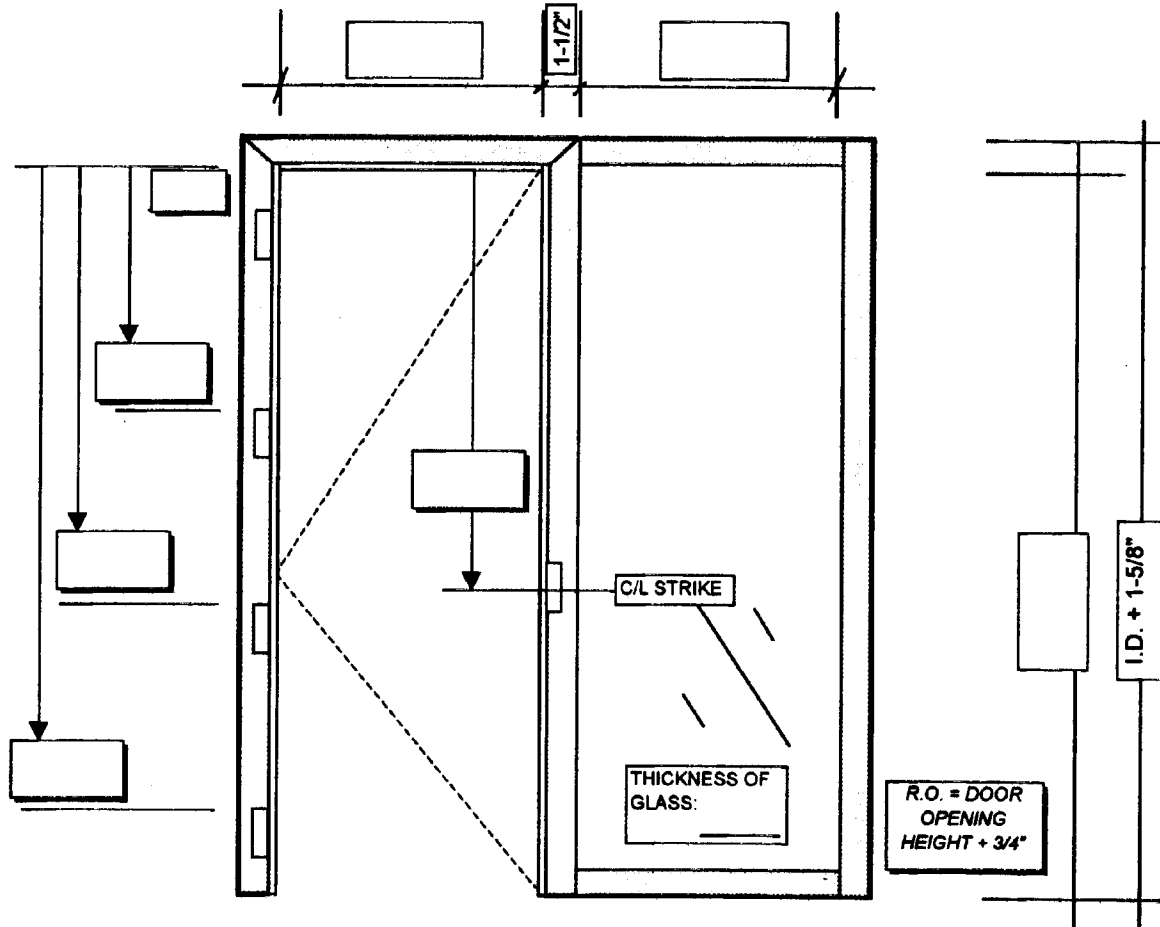
STANDARD HINGES: 4-1/2 X 4-1/2

ECLIPSE SYSTEMS, INC

DOOR FRAME AND COMPRESSION SIDELITE DETAIL SHEET # _____ OF _____

DATE: _____

PROJECT NAME: _____ REFERENCE # _____ PO # _____



DOOR FRAME: STANDARD TRIM _____ FLUSH TRIM _____ FINISH: _____

CUT NET WIDTH _____ CUT NET HEIGHT _____ 2" SCRIBE _____

THROAT SIZE: 3-3/4 _____ 4-7/8 _____

20 MIN. LABEL _____ *SPECIAL INSTRUCTIONS _____

***STANDARD NOTES:**

ROUGH OPENING WIDTH = DOOR FRAME + SIDELITE + 3"

STANDARD HINGES: 4-1/2 X 4-1/2, STRIKE : ASA U.O.N.

COMPRESSION GLAZING DOES NOT HAVE SNAP-ON TRIM (FRICTION FIT)

ECLIPSE SYSTEMS, INC		STOCK ITEMS
DESCRIPTION	PART #	LENGTHS AVAILABLE
3-3/4 DOOR JAMB	334DF	AS REQUESTED
4-7/8 DOOR JAMB	478DF	AS REQUESTED
7-1/4 DOOR JAMB	714DF	AS REQUESTED
STANDARD TRIM	STRIM	AS REQUESTED
FLUSH TRIM	FLTRIM	AS REQUESTED
3-3/4 COMPRESSION RAIL	334CR	10'-2"
3-3/4 COMPRESSION RAIL	334CR	24'-2"
3-3/4 TRIMMED RAIL	334TR	24'-2"
4-7/8 COMPRESSION RAIL	478CR	10'-2"
4-7/8 COMPRESSION RAIL	478CR	24'-2"
4-7/8 TRIMMED RAIL	478TR	24'-2"
3-3/4 COMPRESSION SNAP-IN	334CSI	10'-0"
3-3/4 FLUSH TRIM SNAP-IN	334FTSI	9'-2"
3-3/4 TRIMMED SNAP-IN	334TSI	24'-6"
4-7/8 COMPRESSION SNAP-IN	478CSI	10'-0"
4-7/8 FLUSH TRIM SNAP-IN	478FTSI	9'-2"
4-7/8 TRIMMED SNAP-IN	478TSI	24'-6"
3-3/4 COMPRESSION SILL	334CS	24'-0"
3-3/4 TRIMMED SILL	334TS	24'-0"
4-7/8 COMPRESSION SILL	478CS	24'-0"
4-7/8 TRIMMED SILL	478TS	24'-0"
3-3/4 COMPRESSION STOP	334CST	24'-0"
3-3/4 TRIMMED STOP (X 2)	334TST	24'-0"
4-7/8 COMPRESSION STOP	478CST	24'-0"
4-7/8 TRIMMED STOP, (X 2)	478TST	24'-0"
4-7/8 CASSED OPENING	478CO	AS REQUESTED
3-3/4 CASSED OPENING	334CO	AS REQUESTED
COORDINATOR FILLER BAR	COOR	AS REQUESTED
3-3/4 END CAP	334EC	10'-2"
4-7/8 END CAP	478EC	10'-2"
3-3/4 TAPEABLE TOP TRACK	334TT	24'-0"
4-7/8 TAPEABLE TOP TRACK	478TT	24'-0"
3-3/4 DEMOUNTABLE TOP TRACK	334DTT	20'-0"
3-3/4 SNAP-IN DOOR HEADER	334SIH	AS REQUESTED
4-7/8 SNAP-IN DOOR HEADER	478SIH	AS REQUESTED
4-7/8 LOW WALL CAP (DBA)	478LSC	10'-2"